

PTH1500 SERIES

DESKTOP SMART CARD PERSONALIZATION MACHINE

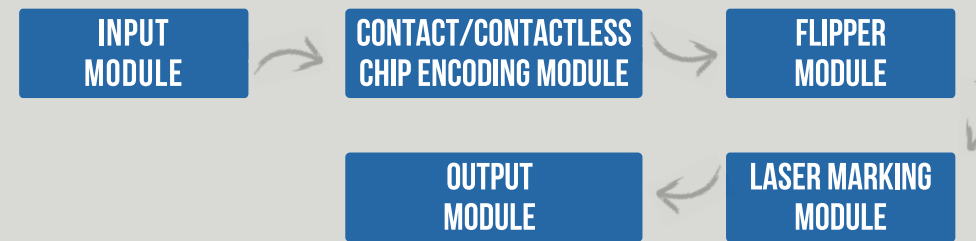


HIGHT-EFFICIENCY DESKTOP SMART CARD PERSONALIZATION MACHINE

FEATURES

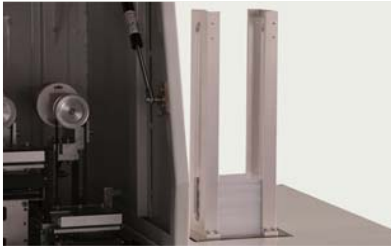

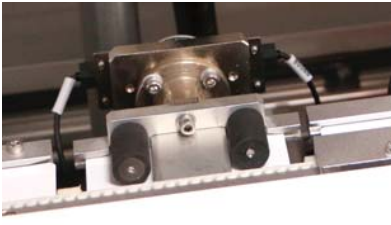
- PTH1500 series are mainly used for contact/contactless card pre-personalization, personalization and laser marking, such as SIM Card, Healthcare Insurance Card, Public Parking Payment Card, Loyalty & Membership Card etc.
- The failed cards can be re-personalized on-line during production.
- Both contact and contactless personalization can be realized without any adjustment of mechanical parts.
- PTH1500 series are able to work with high speed, high precision, and high stability.
- Customization and secondary development are supported.




WORKFLOW SYSTEM



FEATURES&WORKFLOW SYSTEM

CONFIGURATION

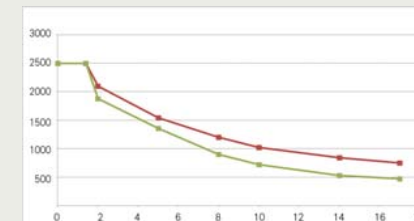
	Input Module	There is one removable input magazine, and the Max. Capacity is 300pcs, which can be customized.
	Contact/Contactless Chip Encoding Module	Equipped with two lift-towers. One has 4 contact perso stations, and the other has 2 contactless perso stations. The two towers can work at the same time or disabled any one.
	Flipper Module	It decides which side to be printed on.

	Laser Module	Equipped with 12-watt air-cooled laser, and graphical personalization can be realized accordingly with marking accuracy of $\pm 0.2\text{mm}$.
	Output Module	There is one removable output magazine, and the Max. Capacity is 300pcs, which can be customized.
	Optional Module	<p>OCR Module: Check the accuracy of laser marking contents or read the surface information of card before personalization.</p> <p>Contact Personalization Module: Both towers are configured with 8 contact readers in total for contact personalization.</p> <p>Contactless Personalization Module: Both towers are configured with 4 contactless readers in total for contactless personalization.</p>

MACHINE	MAG-STRIP ENCODING	CONTACT ENCODING	CONTACTLESS ENCODING	SINGLE LASER	DOUBLE LASER	DOUBLE-SIDED PRINTING	THERMAL PRINTING	OCR	PRE-PERSO
PTH1500	●	●	○	●	○	○	○	○	—
PTH1501	○	●	●	●	○	○	—	○	—
PTH1502	○	●	○	●	○	○	—	○	—
PTD-U6	—	—	●	—	—	—	—	—	●

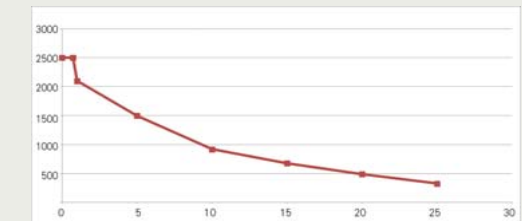
● Standard Configuration ○ Optional Module — None

THROUGHPUT-PERSO TIME RELATIONSHIP



- X-axis shows the personalization time(unit:sec.) and Y-axis shows the throughput (unit: cph).
- When personalization time is less than 1.4 sec., the throughput is 2500cph.
- The red line represents the contactless throughput tendency and the green line shows the contact throughput tendency.

THROUGHPUT-LASER MARKING TIME RELATIONSHIP



- X-axis shows the laser marking time(unit:sec.) and Y-axis shows the throughput (unit: cph).
- When laser marking time is less than 0.725 sec., the throughput is 2500cph.

TECHNICAL PARAMETER

CATEGORY	SPECIFICATIONS
Power Supply	PTH1500: 220V (-5%~+10%) , 50Hz, 800KW PTH1501: 220V (-5%~+10%) , 50Hz, 1KW PTH1502: 220V (-5%~+10%) , 50Hz, 600W
Operation Temperature	+12℃ ~ +38℃
Operating System	Windows 7
Max. Throughput	PTH1500: 1500cph PTH1501/ PTH1502: 2500cph
Card Supported	PTH1500: Conform with standards of ISO7816 , ISO14443 , ISO7810 , ISO7811 PTH1501 / PTH1502: Conform with standards of ISO7816, ISO14443
Encoding Failure Rate	Less than 0.1%
Malfunction Rate	Downtime is less than 1 hour within 100 hours' continuous production.
Power Type	Motor-driven, Air-Driven
Continuous Running Time	7 X 24 hours
Automatically Reperso Function	Support
Hierarchical User Management	Support
Secondary Development	Support
Overall Dimension	PTH1500: 1200mm(L)×400mm(W)×450mm(H) PTH1501: 1500mm(L)×600mm(W)×900mm(H) PTH1502: 890mm(L)×450mm(W)×750mm(H)
Accessories	Basic Spare Parts, Driver Installation Package, Electrical Drawings, Operation Instructions, Maintenance Instructions, Software Guidebook



Shenyang Piotec Technology Co.,Ltd.
 Address. No.37, Shiji Rd., Hunnan New District,
 Shenyang, China. P.C. 110179
 T. (86) 024-23782485 W. www.piotec.cn
 F. (86) 024-23783285 U. sales@piotec.com